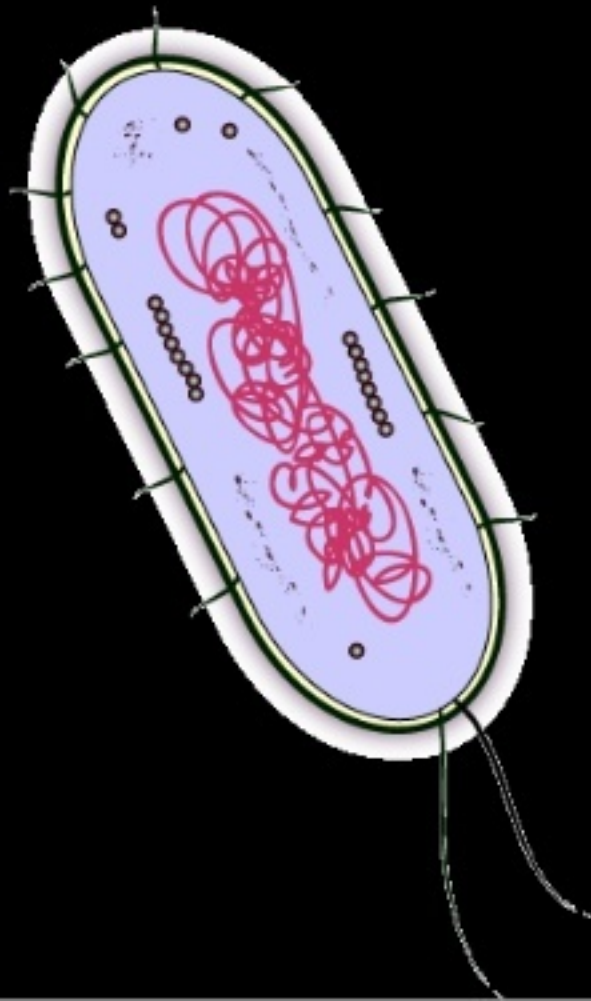


Prokaryotic Cells

- In Greek:
 - Pro = before
 - karyotic = nucleus
- Cell that do not have a nucleus
- Bacteria



Eukaryotic Cells

- In Greek:
 - Eu = True
 - Karyotic = nucleus
- Cell that have a nucleus



Prokaryotic vs. Eukaryotic

No Nucleus

Nucleus

No Membrane – covered
Organelles

Membrane – covered
Organelles

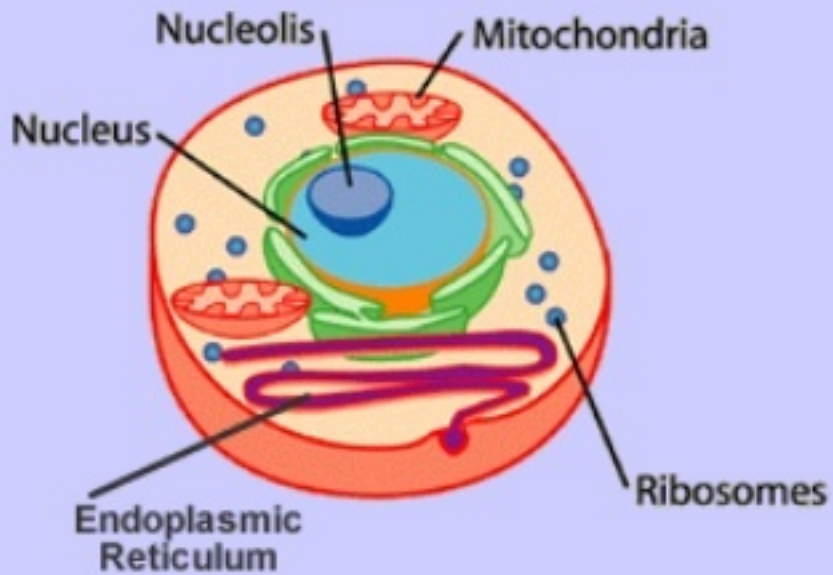
Circular DNA (in a circle)

Linear DNA (in a line)

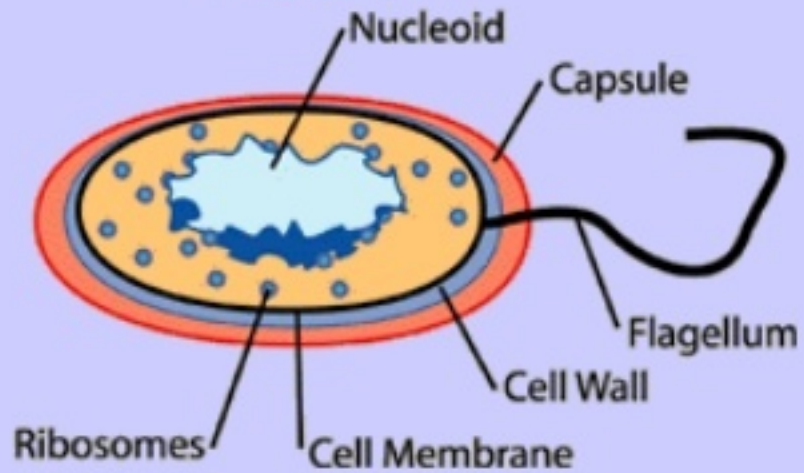
Bacteria

All other cells

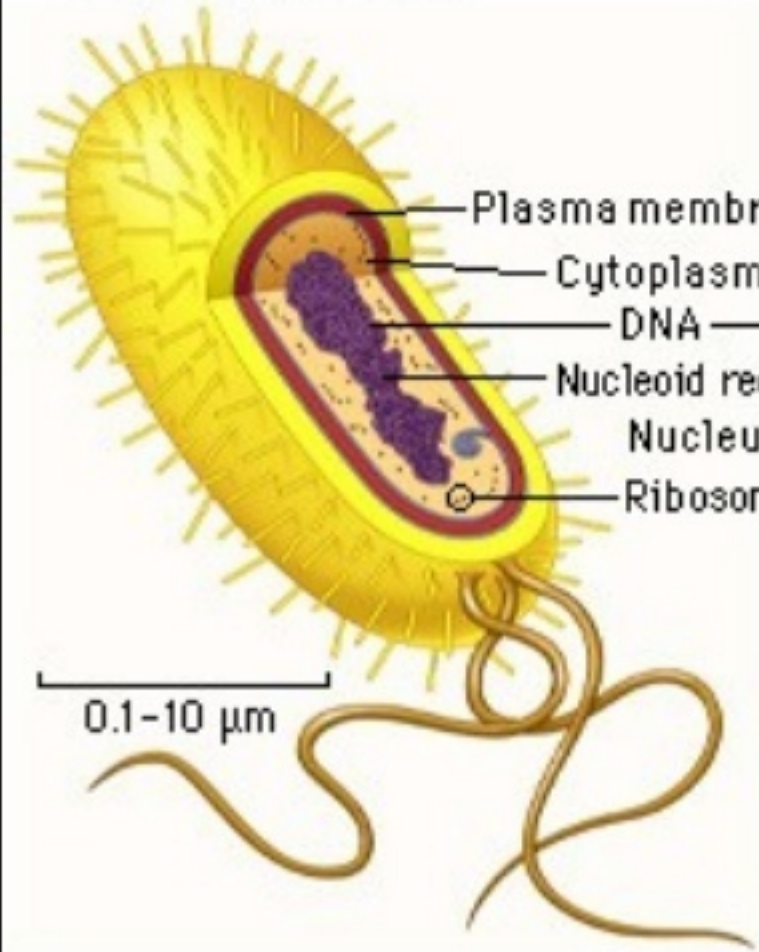
Eukaryote



Prokaryote

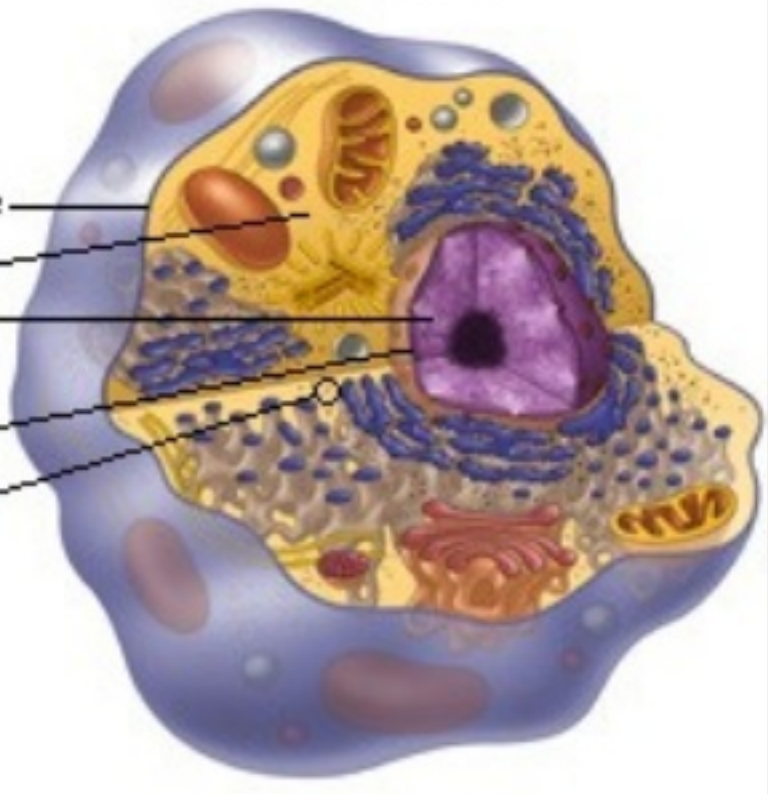


Prokaryotic cell



0.1-10 μm

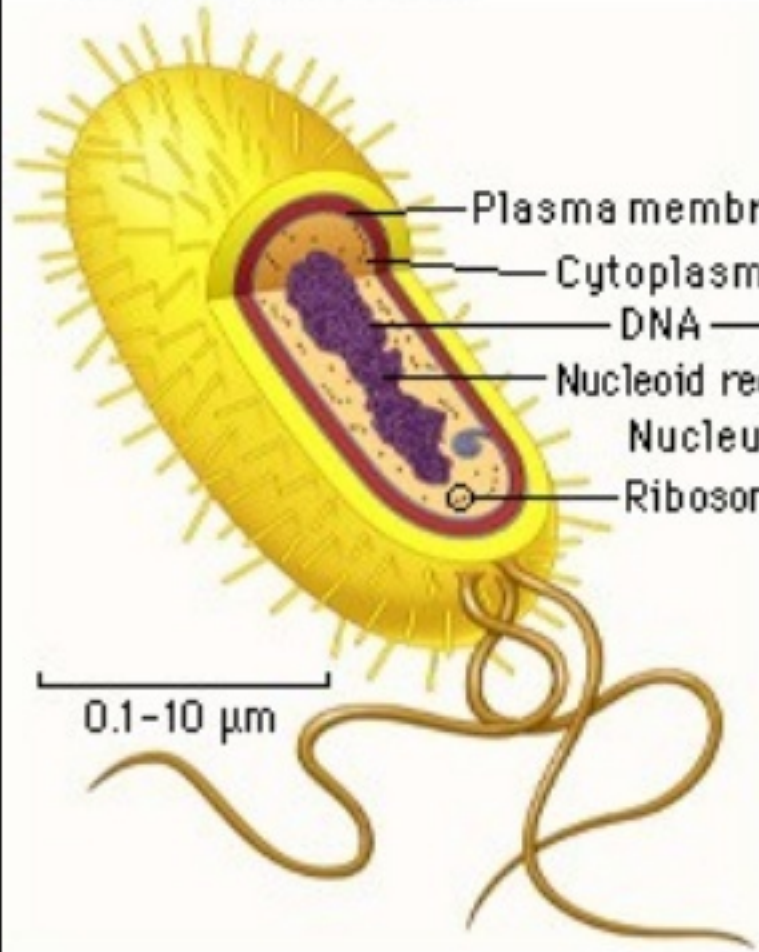
Eukaryotic cell



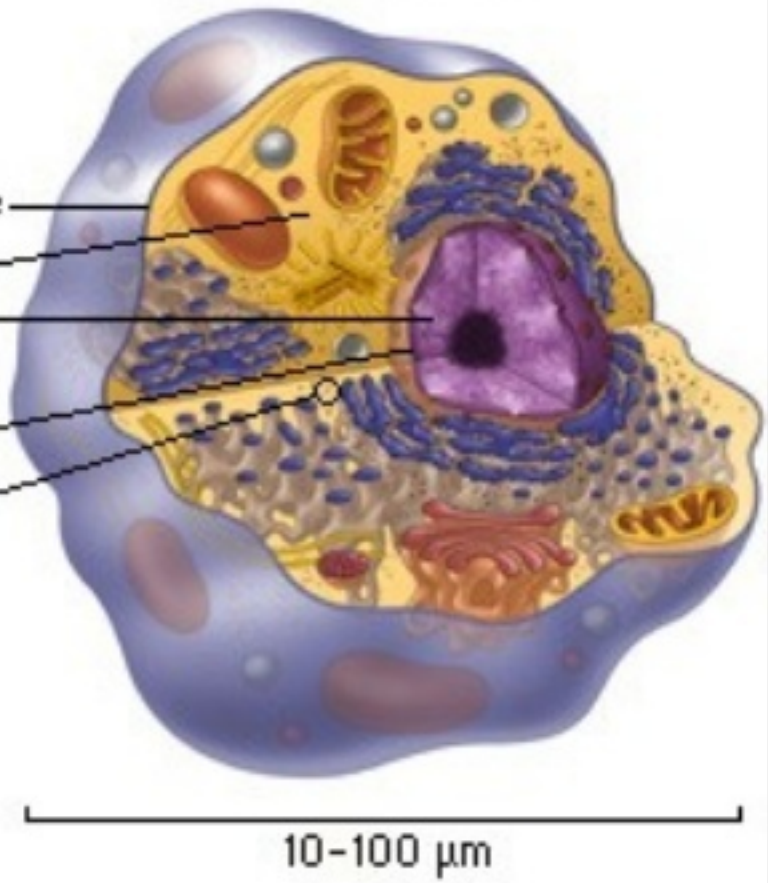
10-100 μm

- Plasma membrane
- Cytoplasm
- DNA
- Nucleoid region
- Nucleus
- Ribosomes

Prokaryotic cell



Eukaryotic cell



Plasma membrane

Cytoplasm

DNA

Nucleoid region

Nucleus

Ribosomes

0.1-10 μm

10-100 μm